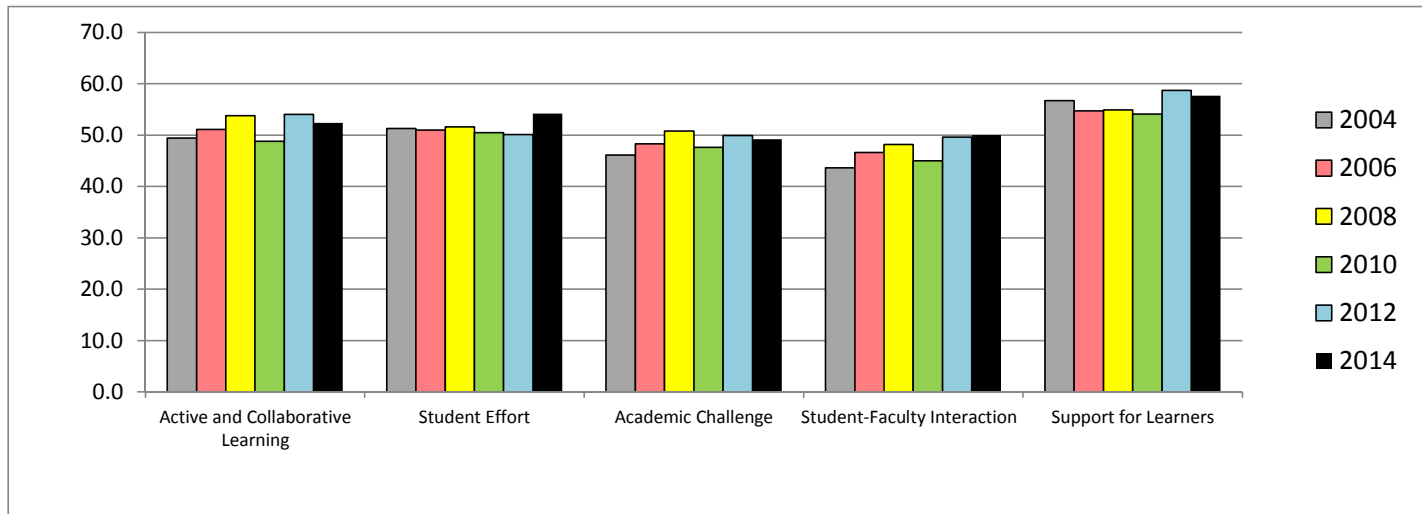


Southwest Texas Junior College
 Community College Survey of Student Engagement
 Benchmark Report 2004 - 2014

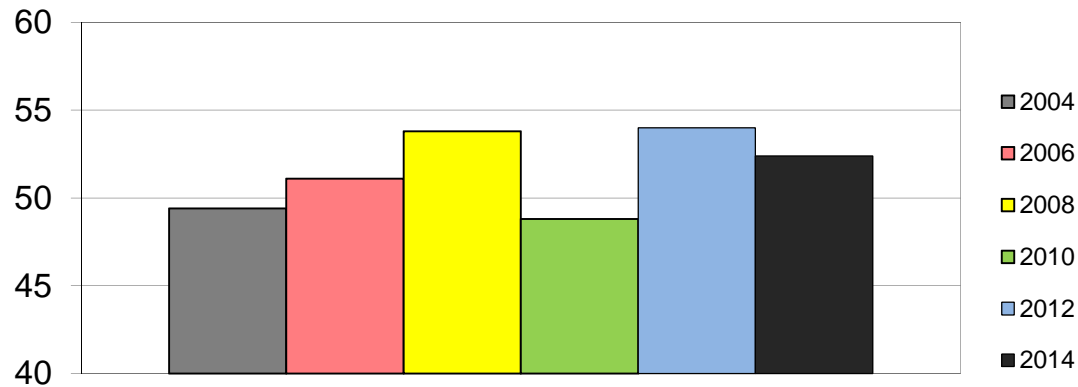
Benchmark	SWTJC					
	2004	2006	2008	2010	2012	2014
Active and Collaborative Learning	49.4	51.1	53.8	48.8	54.0	52.4
Student Effort	51.3	51.0	51.6	50.5	50.1	54.2
Academic Challenge	46.1	48.3	50.8	47.6	49.9	49.2
Student-Faculty Interaction	43.6	46.6	48.2	45.0	49.6	50.0
Support for Learners	56.7	54.7	54.9	54.1	58.7	57.7

Note: Benchmark scores are standardized so that all CCSSE Cohort respondents have a mean of 50 and standard deviation of 25.



Southwest Texas Junior College Community College Survey of Student Engagement Active and Collaborative Learning Benchmark All Students

Description - Students learn more when they are actively involved in their education and have opportunities to think about and apply what they are learning in different settings. Through collaborating with others to solve problems or master challenging content, students develop valuable skills that prepare them to deal with the kinds of situations and problems they will encounter in the workplace, the community, and their personal lives.



	2004	2006	2008	2010	2012	2014
SWTJC Students	49.4	51.1	53.8	48.8	54.0	52.4

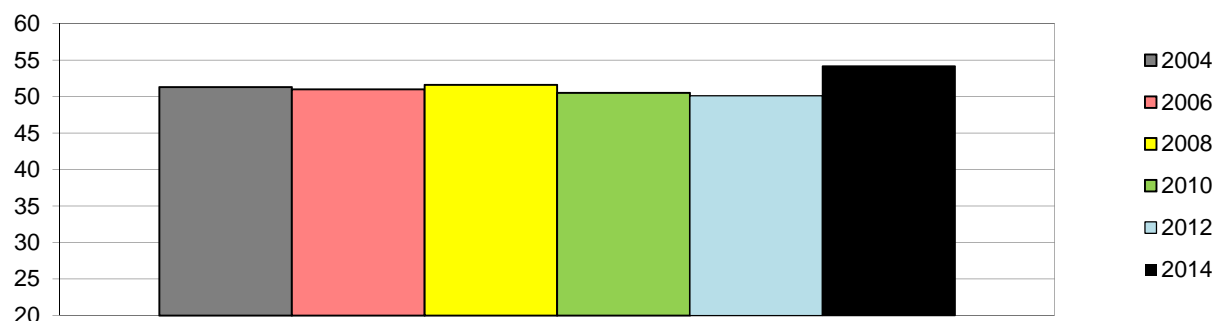
Active and Collaborative Learning

4 In your experiences at this college during the current school year, about how often have you done each of the following?

	2004	2006	2008	2010	2012	2014
a. Asked questions in class or contributed to class discussions	2.61	2.76	2.77	2.73	2.83	2.76
b. Made a class presentation	2.07	2.29	2.26	2.04	2.31	2.30
f. Worked with other students on projects during class	2.53	2.45	2.55	2.47	2.69	2.62
g. Worked with classmates outside of class to prepare class assignments	1.90	1.92	2.07	2.04	2.16	2.17
h. Tutored or taught other students (paid or voluntary)	1.32	1.34	1.41	1.37	1.40	1.40
i. Participated in a community-based project as a part of a regular course	1.29	1.30	1.41	1.29	1.40	1.40
r. Discussed ideas from your readings or classes with others outside of class (students, family members, co-workers, etc.)	1.68	2.50	2.57	2.51	2.55	2.53

Southwest Texas Junior College Community College Survey of Student Engagement Student Effort Benchmark All Students

Description - Students' own behaviors contribute significantly to their learning and the likelihood that they will successfully attain their educational goals.



	2004	2006	2008	2010	2012	2014
SWTJC Students	51.3	51.0	51.6	50.5	50.1	54.2

Student Effort

4 In your experiences at this college during the current school year, about how often have you done each of the following?

	2004	2006	2008	2010	2012	2014
c. Prepared two or more drafts of a paper or assignment before turning it in	2.54	2.53	2.58	2.47	2.63	2.67
d. Worked on a paper or project that required integrating ideas or information from various sources	2.63	2.71	2.82	2.70	2.75	2.98
e. Come to class without completing readings or assignments	1.80	1.86	1.82	1.75	1.86	1.75

6 During the current school year, about how much reading and writing have you done at this college?

	2004	2006	2008	2010	2012	2014
b. Number of books read on your own (not assigned) for personal enjoyment or academic enrichment	2.02	2.01	2.08	1.89	1.99	2.05

10 About how many hours do you spend in a typical 7-day week doing each of the following?

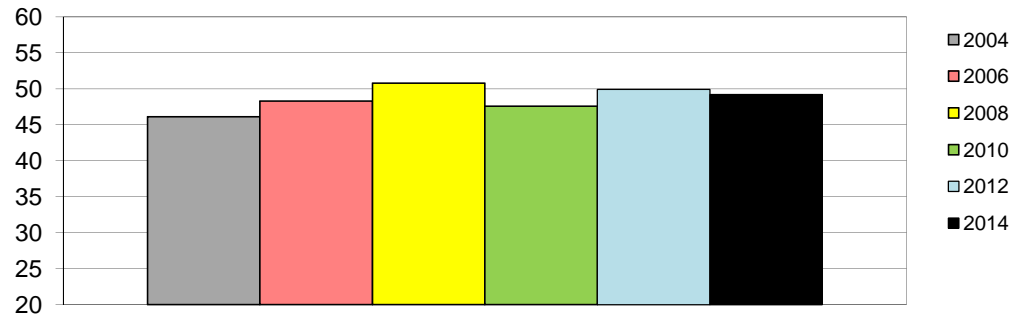
	2004	2006	2008	2010	2012	2014
a. Preparing for class (studying, reading, writing, rehearsing, doing homework, or other activities related to your program)	1.62	1.65	1.77	1.71	1.69	1.72

13 How often do you use the following services at this college?

	2004	2006	2008	2010	2012	2014
d. Frequency: Peer or other tutoring	1.47	1.53	1.52	1.65	1.67	1.70
e. Frequency: Skill labs (writing, math, etc.)	1.94	1.90	1.79	1.87	1.93	1.95
h. Frequency: Computer lab	2.07	2.10	2.05	2.11	2.08	2.13

**Southwest Texas Junior College
Community College Survey of Student Engagement
Academic Challenge Benchmark
All Students**

Description - Challenging intellectual and creative work is central to student learning and collegiate quality. Ten survey items address the nature and amount of assigned academic work, the complexity of cognitive tasks presented to students, and the standards faculty members use to evaluate student performance.



	2004	2006	2008	2010	2012	2014
SWTJC Students	46.1	48.3	50.8	47.6	49.9	49.2

Academic Challenge

4 In your experiences at this college during the current school year, about how often have you done each of the following?

	2004	2006	2008	2010	2012	2014
p. Worked harder than you thought you could to meet an instructor's standards or expectations	2.54	2.43	2.60	2.59	2.58	2.59

5 During the current school year, how much has your coursework at this college emphasized the following mental activities?

	2004	2006	2008	2010	2012	2014
b. Analyzing the basic elements of an idea, experience, or theory	2.62	2.76	2.88	2.78	2.90	2.90
c. Synthesizing and organizing ideas, information, or experiences in new ways	2.59	2.70	2.79	2.71	2.84	2.81
d. Making judgments about the value or soundness of information, arguments, or methods	2.44	2.48	2.62	2.43	2.64	2.65
e. Applying theories or concepts to practical problems or in new situations	2.41	2.48	2.63	2.52	2.71	2.67
f. Using information you have read or heard to perform a new skill	2.56	2.65	2.74	2.80	2.88	2.85

6 During the current school year, about how much reading and writing have you done at this college?

	2004	2006	2008	2010	2012	2014
a. Number of assigned textbooks, manuals, books, or book-length packs of course readings	2.74	2.85	2.87	2.85	2.87	2.86
c. Number of written papers or reports of any length	2.64	2.95	2.74	2.75	2.86	2.88

7 Mark the box that best represents the extent to which your examinations during the current school year have challenged you to do your best work at this college.

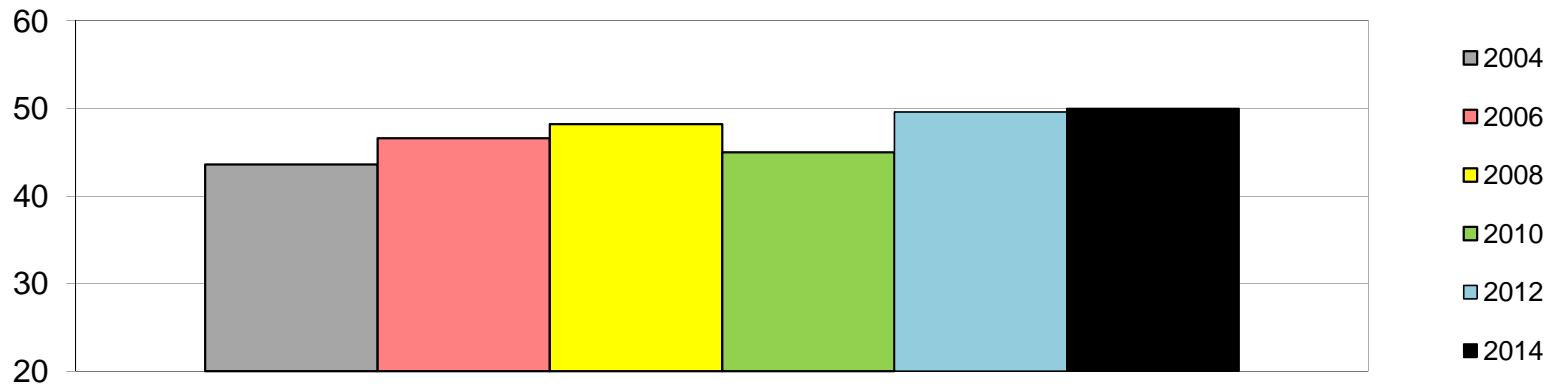
	2004	2006	2008	2010	2012	2014
	4.91	4.84	4.97	4.91	4.81	4.93

9 How much does this college emphasize each of the following?

	2004	2006	2008	2010	2012	2014
a. Encouraging you to spend significant amounts of time studying	2.89	2.83	2.92	2.94	3.06	3.05

Southwest Texas Junior College Community College Survey of Student Engagement Student-Faculty Interaction Benchmark All Students

Description - In general, the more contact students have with their teachers, the more likely they are to learn effectively and persist toward achievement of their educational goals. Through such interactions, faculty members become role models, mentors, and guides for continuous, lifelong learning.



	2004	2006	2008	2010	2012	2014
SWTJC Students	43.6	46.6	48.2	45.0	49.6	50.0

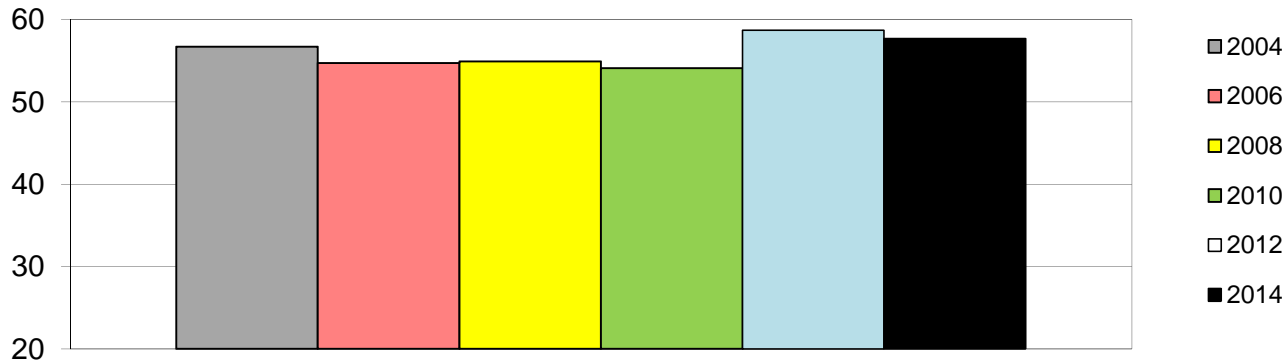
Student Faculty Interactions

4 In your experiences at this college during the current school year, about how often have you done each of the following?

	2004	2006	2008	2010	2012	2014
k. Used e-mail to communicate with an instructor	1.84	2.16	2.45	2.57	2.61	2.88
l. Discussed grades or assignments with an instructor	2.37	2.38	2.46	2.43	2.51	2.60
m. Talked about career plans with an instructor or advisor	1.92	1.88	2.01	1.94	2.14	2.22
n. Discussed ideas from your readings or classes with instructors outside of class	1.68	1.77	1.77	1.64	1.89	1.86
o. Received prompt feedback (written or oral) from instructors on your performance	2.31	2.40	2.44	2.37	2.57	2.51
q. Worked with instructors on activities other than coursework	1.35	1.44	1.48	1.42	1.62	1.57

Southwest Texas Junior College Community College Survey of Student Engagement Support for Learners Benchmark All Students

Description - Students perform better and are more satisfied at colleges that are committed to their success and cultivate positive working and social relationships among different groups on campus.



	2004	2006	2008	2010	2012	2014
SWTJC Students	56.7	54.7	54.9	54.1	58.7	57.7

Support for Learners

9 How much does this college emphasize each of the following?

	2004	2006	2008	2010	2012	2014
b. Providing the support you need to help you succeed at this college	2.88	2.79	2.91	3.03	3.13	3.11
c. Encouraging contact among students from different economic, social, and racial or ethnic backgrounds	2.39	2.38	2.44	2.41	2.63	2.63
d. Helping you cope with your non-academic responsibilities (work, family, etc.)	2.11	2.07	2.11	2.11	2.29	2.22
e. Providing the support you need to thrive socially	2.28	2.23	2.29	2.33	2.46	2.39
f. Providing the financial support you need to afford your education	2.79	2.65	2.70	2.77	2.91	2.95

	2004	2006	2008	2012	2012	2014
a. Frequency: Academic advising/planning	1.73	1.79	1.82	1.83	1.89	1.97
b. Frequency: Career counseling	1.61	1.60	1.61	1.51	1.72	1.77